

**OSMIUM**

**OSMIUM-120**

**Next Gen. Super Efficient Linear High-Bay**

**OSMIUM** Next generation Super Efficient light output peak light power

SUPER 200 Lumens per Watt Design  
Linear Straight Design

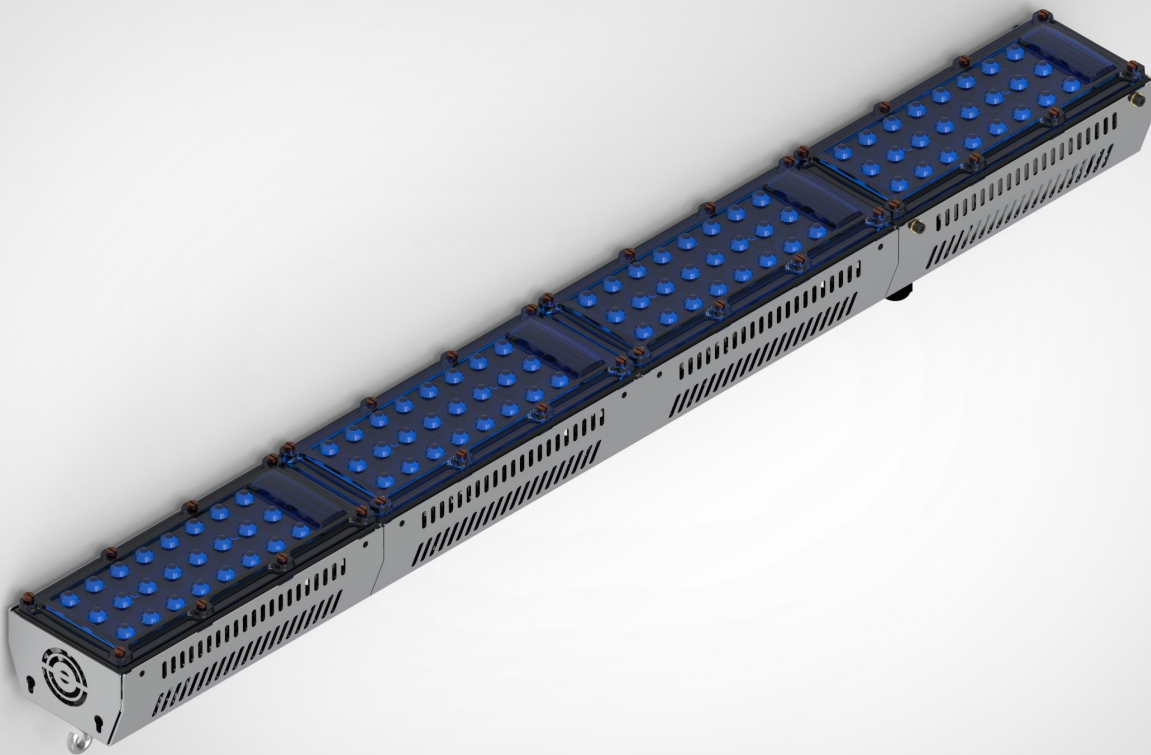
Linear replacement for fluorescent fittings

Suitable for: Sport Arenas, Gymnasiums, Tennis  
Courts, Warehouses any Very large Areas

96 X Next Generation LED's

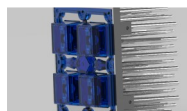
Surface Mount and Wire Guard

Customised LENSES available



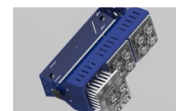
### MECHANICAL

Adjustable LED Flood Light.  
With Different Optic Lenses.  
Suitable for very large areas like: Stadium  
Lights, Indoor Arenas, Gymnasiums,  
Warehouses, Garages, Manufacturing  
facilities, Aircraft Hangers, Retail stores,  
Super Stores & Tennis Courts.  
Fitting with different LENS options



### LED CONFIGURATION

Latest Z5M SEOUL  
96 x 2W High Power CHIPS  
Nominal CCT/Color 5650K Cool White  
Typical CRI 70  
Typical Luminous Flux @350mA  
200lm per Watt  
Extreme Cooling Patented



### AC POWER

Powered by AC Single Phase.  
Power Factor Greater than 0.98

**OSMIUM**

**OSMIUM-120**

**Next Gen. Super Efficient Linear High-Bay**

**Designed System Performance**



Comparable to 200W—400W Metal Halide replacement LED solution

LED Driver	Meanwell
Supply Volts	100-300VAC
Power Factor	Greater than 0.98
Power Consumption	120W
IP Rating	IP21
NEXT generation LED's	Z5M SEOUL
Quantity	96 x NEXT GEN
Nominal CCT/Colour	5650K Cool White
Typical CRI	70
Typical Luminous Flux (lm) @350mA Forward Current +_1W	200lm per Watt, 24,000lm
Cooling Multi Contact Star Extruded ALUMINIUM	Machined Profile
Lens Type Used	Numerous Lenses Available



IS 15885(Part 2/Sec13)  
  
 R-41027766  
 (for XLG-150I type only)



Note.15  
 (Except for Blank type)

  
 (Except for L type)



**LVLE SELV**  
 (For 24V only) (Except for L type)

**IP67**



**UL** Type HL

**UL** E320521  
 (for 12,24 only)



Note.12