

## BARIUM

# 150W-AC-25,050L

150W AC powered flood light 25,050 Lumens

## BARIUM Commercial & Industrial LED High Bay & Stadium Lights

25,050 Lumens  
167lm/W

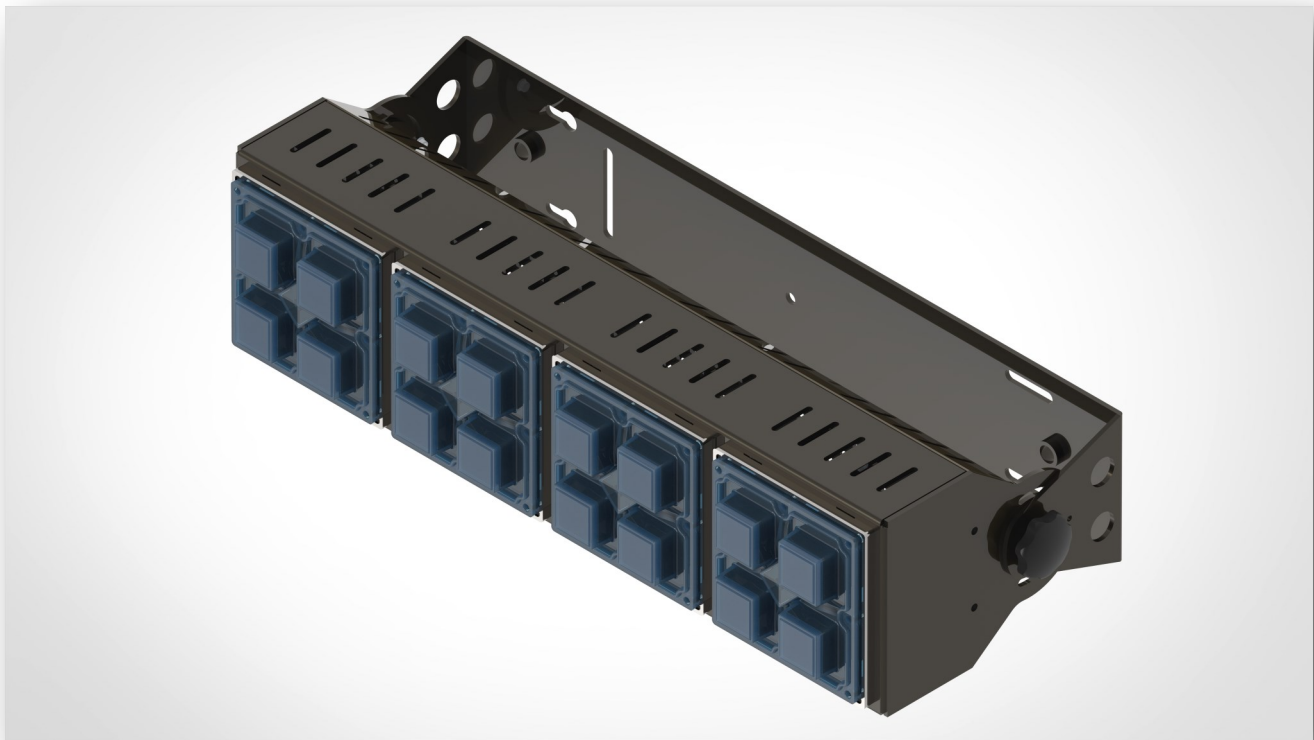
LED Replacement for 200W/300W/400W Metal  
Halide High bay fittings

Suitable for: Sport Arenas, Gymnasiums, Tennis  
Courts, Warehouses any Very large Areas

16 X Next Generation LED's

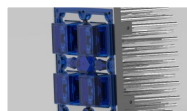
Surface Mount and Wire Guard

Customised LENSES available



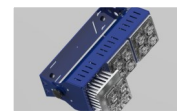
### MECHANICAL

Adjustable LED Flood Light.  
With Different Optic Lenses.  
Suitable for very large areas like: Stadium  
Lights, Indoor Arenas, Gymnasiums,  
Warehouses, Garages, Manufacturing  
facilities, Aircraft Hangers, Retail stores,  
Super Stores & Tennis Courts.  
Fitting with different LENS options



### LED CONFIGURATION

LUMILEDS MX  
2x2 LUMILED MX Extreme High Power CHIPS  
Nominal CCT/Color 5650K Cool White  
Typical CRI 70  
Typical Luminous Flux @350mA  
167lm per Watt  
Extreme Cooling Patented



### AC POWER

Powered by AC Single Phase.  
Power Factor Greater than 0.98

**BARIUM**

**150W-AC-25,050L**

**150W AC powered flood light 25,050 Lumens**

**Designed System Performance**



Comparable to 200W—400W Metal Halide replacement LED solution	25,050 (LUMENS)
LED Driver	Meanwell
Supply Volts	100-300VAC
Power Factor	Greater than 0.98
Power Consumption	150W
IP Rating	IP67
NEXT generation LED's	LUMILEDS MX
Quantity	16 x LUMILED's MX
Nominal CCT/Colour	5650K Cool White
Typical CRI	70
Typical Luminous Flux (lm) @350mA Forward Current +_1W	167lm per Watt
Cooling Multi Contact Star Extruded ALUMINIUM	Machined Profile
Lens Type Used	Numerous Lenses Available



IS 15885(Part 2/Sec13)



R-41027766

(for XLG-150l type only)



Note.15  
(Except for Blank type)



(Except for L type)

(For 24V only)

(Except for L type)

Type HL

(for 12,24 only)

Note.12